

Hill Country 600

2009



March 14 and 15, 2009

Hill Country 600 Route Book 2009

Phone Numbers



* **ALL TIME STATIONS:** (210) 464-5606 HC600 HQ (direct link to George)

- o CLEARLY state: Your name & Solo Racer/Team Name
- o Time Station & Time your racer (team) passed through

Emergency back up HQ number is 866.264.3407

Competitors and crew may call this number for live updates: **(210) 464-5606** You will get a brief summary of the standings and current TS check in. Please keep in mind this is the number for TS reporting so information will be as up to date as possible but the line needs to stay open for TS calls.

- o Results will be posted on www.raceacrossoregon.com throughout the day starting around 1PM Saturday May 14, 2009.
- o Frequent updates will also be posted at: raoGeorge@twitter.com
- o Updates available from 8:30AM CST Saturday through 8PM CST Sunday
- o Family and Friends may call this number: (866) 264-3407 for updates between Sat 12:00 PM CST - 9:00 PM CST and Sun 10:00 AM CST - 8:00 PM CST

* **EMERGENCY & HEAD OFFICIALS**

- o 911
- o (210) 464-5606 George's Mobile
- o (866) 264-3407 Race HQ

* **PENALTIES**

Time penalties for traffic law violations and/or RAO rule violations will accumulate throughout the race. These time penalties are cumulative. Riders and Teams are allowed 5 penalties then disqualified on the 6th penalty.

If rider penalties will change the finishing order of the race, Race Officials will detain the guilty rider at the last time station for the accumulated number of penalty minutes before being allowed to proceed.

If rider penalties will not change the finishing order, then the rider penalties will be added to their overall time at the finish line.

Any rider, crew or personal film crew seen violating traffic or race rules will be penalized. These penalties are served by the rider.

Warnings may be given at the discretion of a Race Officials and/or Race Director.

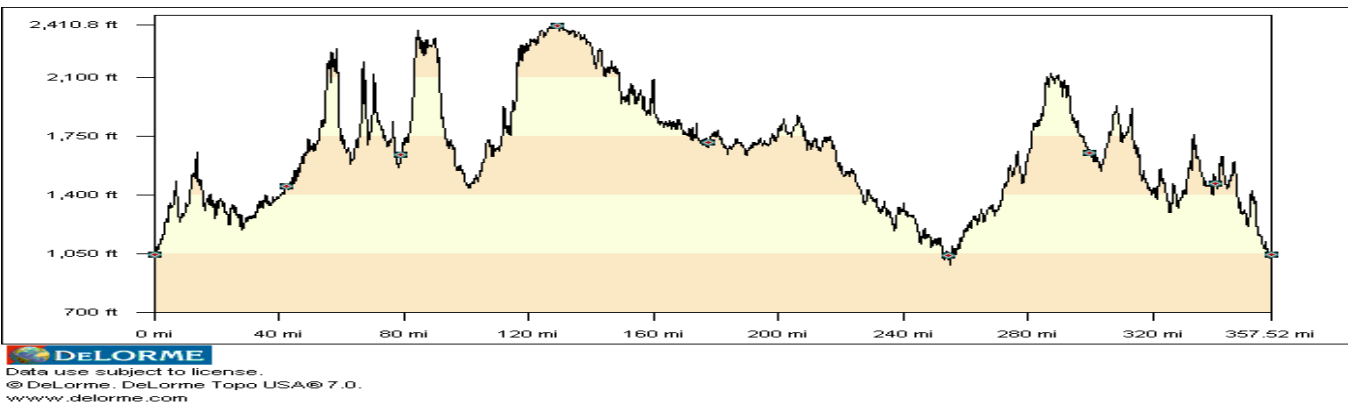
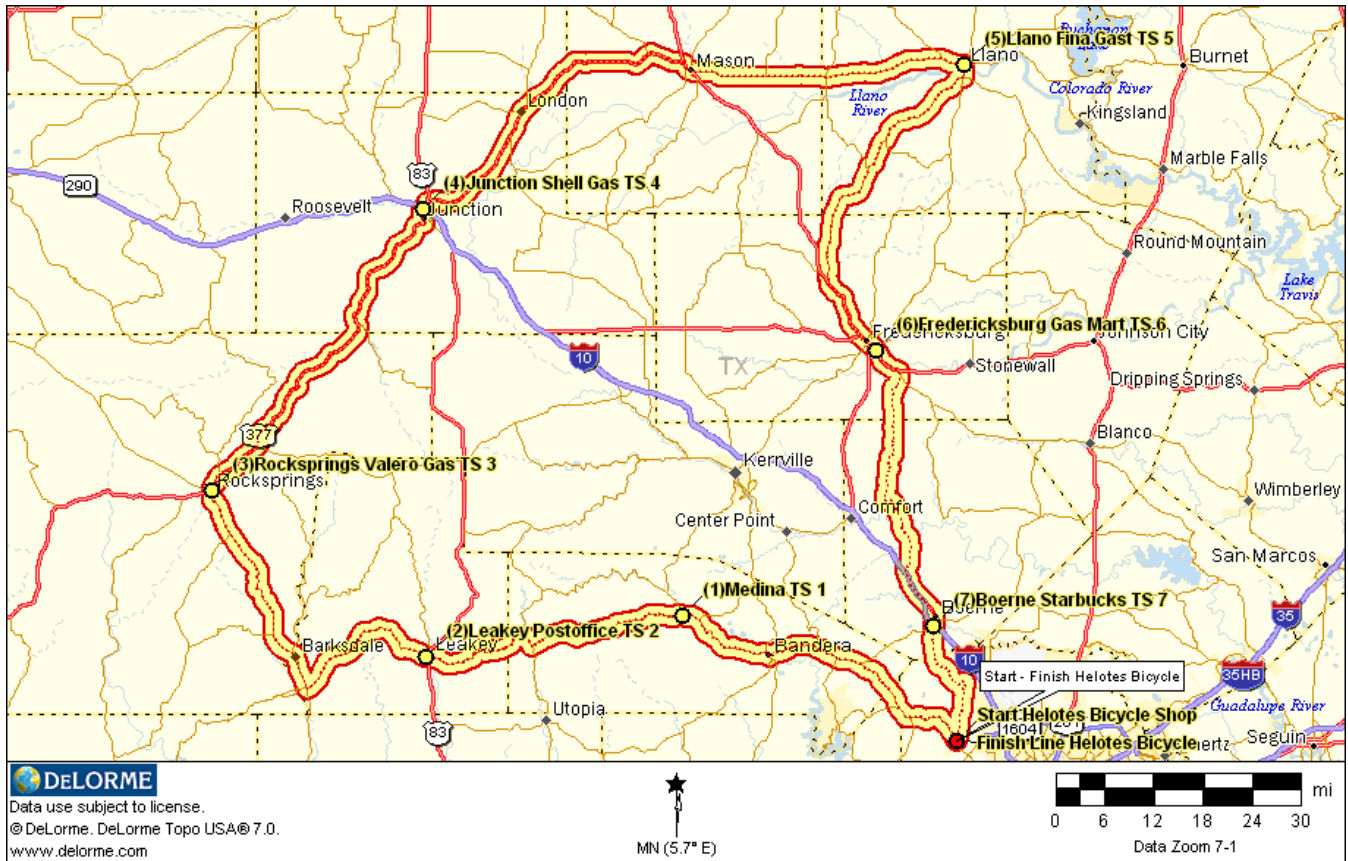
Warnings can be given at any time, although a warning does not have to be given before a penalty can be assessed.

Accuracy comments are always appreciated. Please forward such comments about the accuracy of the data to Terri Gooch at raoterri@gmail.com

Route book designed by David Bradley (Team Raven Lunatics).



Hill Country 600 Route Book 2009



Maps and Profiles Courtesy of David Bradley (Team Raven Lunatics)

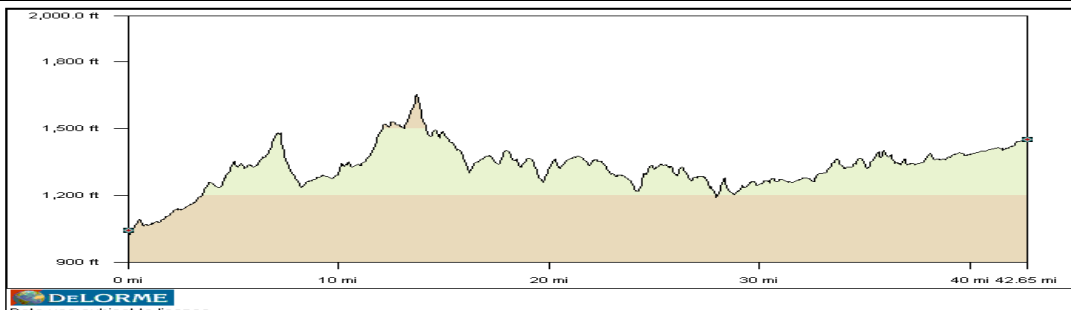


Hill Country 600 Route Book 2009



START: HELOTES BICYCLE SHOP TO MEDINA TS1
Mile 0.0 to Mile 42.6 Total Distance this section 42.6 Miles

Miles from Start	Turn	Miles to Next Turn	Road/place/note	Miles to next TS	Elev	Map Insert
0.0		0.4	Begin race outside of Helotes Bicycle Shop OLD BANDERA RD	42.6	1030	
0.4	RIGHT	0.0	Old Bandera Road to Stop Light	42.2		1
0.4	LEFT	28.7	Left turn onto TX 16 **Caution - Divided Hwy - Be sure to make your turn to the northbound lane	42.2		1
4.5			Oak Creek Golf Course **END NEUTRAL START**	38.1	1266	
12.0			Bandera County Line	30.6	1516	
15.2		13.9	****BEGIN LEAPFROG SUPPORT**** Wide Grassy Pullouts on Right SUPPORT VEHICLES MUST DRIVE SPEED OF TRAFFIC Pedestrian handoffs only" No handoffs from vehicles	27.4	1453	
17.2	STRAIGHT		Continue Straight on TX 16	25.4		
19.6			Enter Pipe Creek	23.0	1356	
20.1	STRAIGHT		Traffic Light - Continue Straight on TX 16	22.5		
28.7	STRAIGHT		Flashing Yellow Light	13.9		
29.1	RIGHT	13.6	Right Turn Traffic Light Main St / TX 16 to Medina "Cowboy Store" on right	13.5	1243	
29.3	STRAIGHT		Traffic Light - Continue Straight on TX 16	13.3		
29.6	STRAIGHT		Traffic Light - Continue Straight on TX 16	13.0		
40.2			Flashing Yellow Light - Continue Straight on TX 16	2.4		
41.9			Medina City Limit	0.7		
42.6		0.1	TIME STATION # 1 HILL COUNTRY PHONE CO-OP ON RIGHT TWO PAY PHONES; EXCELLENT CELL COVERAGE	1450		2



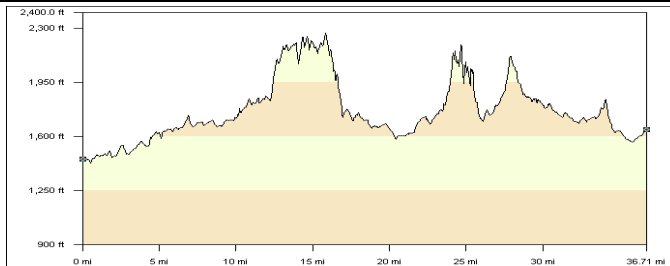
Hill Country 600 Route Book 2009



MEDINA TS1 TO LEAKY TS 2

Mile 42.61 to Mile 79.4 Total Distance this section 36.6 miles

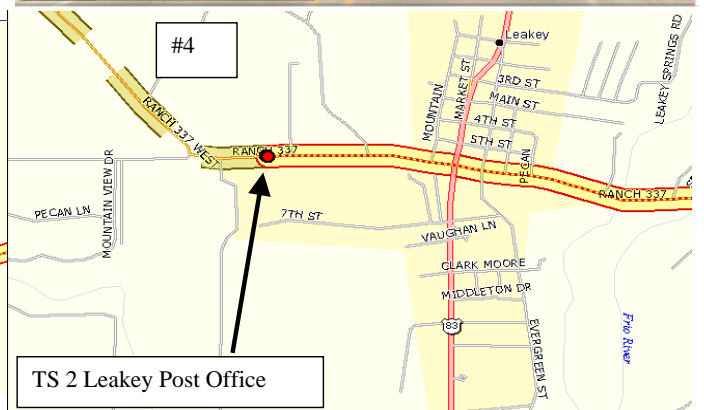
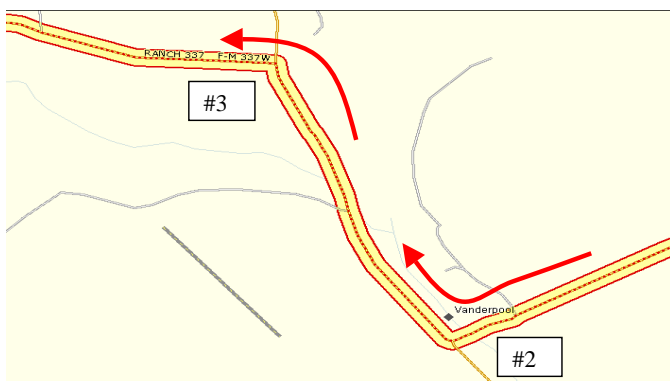
Miles from Start	Turn	Miles to Next Turn	Road/place/note	Miles to next TS	Elev	Map Insert
0.0		0.1	TS #1 Hill Country Phone Co-op	36.6	1450	
0.1	LEFT	20.2	Left turn onto Ranch Rd 337 toward Vanderpool	36.5		1
11.6			Sign: STEEP GRADES & SHARP CURVES - Believe it!	25.0		
11.9			Begin Steep Climb	24.7	1827	
12.4			False Summit	24.2		
12.8			Second False Summit	23.8		
13.1			Third False Summit	23.5		
13.5			End Climb	23.1	2226	
15.9			Begin Steep Descent ***Watch for Rocks*** I have hit 62 mph on this hill	20.7		
16.7			End Descent	19.9	1720	
20.3	RIGHT	1.1	STOP SIGN Ranch Rd 337/187 North Leakey/Lost Maples sign after turn	16.3	1586	2
21.4	LEFT	36.2	Ranch Rd 337 West Toward Leakey	15.2	1623	3
22.4			Begin Steep Climb	14.2	1691	
23.4			False Summit	13.2		
23.9			End Climb	12.7	2054	
24.6			Begin Steep Winding Descent	12.0	2189	
26.3			Begin Climb	10.3	1733	
28.9			End Climb	7.7	2117	
29.2			Begin Steep Winding Descent	7.4		
30.4			Road Surface becomes Texas Chip Seal - Sorry!	6.2		
35.9			Leakey City Limit	0.7		
36.4	STRAIGHT	21.2	STOP SIGN CROSS US 83	0.2		
36.6			TIME STATION # 2 LEAKEY POST OFFICE PAY PHONE LOCATED AT POST OFFICE EXCELLENT CELL PHONE COVERAGE - USE IT IF YOU'VE GOT IT!		1637	4



DE LORME
Data use subject to license.
© DeLorme, DeLorme Topo USA® 7.0.
www.delorme.com



Left Turn Ranch Rd 337



TS 2 Leakey Post Office

Hill Country 600 Route Book 2009



LEAKY TS 2 TO ROCK SPRINGS TS 3

Mile 79.4 to Mile 129.7 Total Distance this section 50.3 miles

Miles from Start	Turn	Miles to Next Turn	Road/place/note	Miles to next TS	Elev	Map Insert
0.0	STRAIGHT	21.0	Continue Straight on Ranch Rd 337	50.3	1637	
0.3			Sign Leaving Leakey	50.0		
3.0			Begin Climb	47.3	1826	
5.0			End Climb Begin Rollers	45.3	2371	
11.4			Begin Winding Descent (unfortunately there are some rollers at the top)	38.9		
20.5			Camp Wood City Limit	29.8		
21.0	RIGHT	76.2	STOP SIGN Turn right on TX 55 North - Nueces St CROSS TRAFFIC DOESN'T STOP Gas and Services available at this intersection *** Pace Vehicle may begin following *** Lights and SMV Triangle on	29.3	1456	1
24.7			Nueces River	25.6		
49.9			Enter Rock Springs	0.4		
50.3	STRAIGHT	46.9	TIME STATION # 3 VALERO GAS STATION ON RIGHT Continue Straight Next turn 46.9 miles FULL SERVICES AND CELL COVERAGE		2406	2

